

gt.  
GARNIER-THIEBAUT  
FRANCE



HOSPITALITY





ALL OVER  
THE WORLD...

Garnier-Thiebaut is your partner.

With great passion, our teams use their expertise and the most advanced technologies to design linen tailored to your professional needs.

Quality, Elegance, comfort, customization, we place more than 185 years of expertise at your disposal.

Welcome to our world.

The logo consists of the letters "Gt." in a stylized, handwritten font.



## BED LINEN





**LIN**  
Pure linen  
160 g/m<sup>2</sup> - Ivory, White



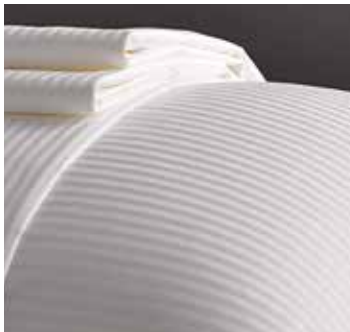
**MONACO**  
Micro stripes sateen combed cotton  
250 TC - 140 g/m<sup>2</sup> - White



**VALLAURIS**  
Sateen cotton 500 TC  
135 g/m<sup>2</sup> - White



**ANTIBES**  
Combed cotton percale 200 TC  
115 g/m<sup>2</sup> - White



**BORDEAUX**  
Stripes sateen cotton 300 TC  
115 g/m<sup>2</sup> - White



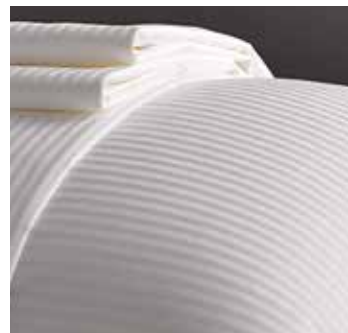
**NICE**  
Sateen cotton 300 TC  
115 g/m<sup>2</sup> - White



**ST RAPHAEL**  
 Percalle polycotton 180 TC  
 105 g/m<sup>2</sup> - White



**CARREAUX**  
 Squared polycotton 180TC  
 140 g/m<sup>2</sup> -White



**SEDUCTION**  
 Stripes Polycotton 165 TC  
 140 g/m<sup>2</sup> - Ivory, White



**BASTIA**  
 Poly sateen 250 TC 80/20  
 140 g/m<sup>2</sup> - White



**CALVI**  
 Poly sateen 250 TC 80/20  
 140 g/m<sup>2</sup> - White - Flame effect



**MILANO**  
 Stripes Poly sateen 250 TC 80/20  
 140 g/m<sup>2</sup> - White











JACQUARD



## BATH LINEN





**ROYALE**  
500 g/m<sup>2</sup> Zero twist



**RIAD**  
280 g/m<sup>2</sup>



**RANELAGH**  
500 g/m<sup>2</sup>



**PRINCESSE**  
500 g/m<sup>2</sup>



**OXANNE**  
450 g/m<sup>2</sup>



**QUADRA**  
400 g/m<sup>2</sup>

Face towel 30X30 cm, Guest towel 30X50 cm, Hand towel 50X100 cm, Bath towel 70X140 cm, Bath sheet 100X150 cm, Pool towel 100X200 cm



**BEL AIR**  
650 g/m<sup>2</sup> Zero twist



**TRANSAT**  
450 g/m<sup>2</sup> 100x200 cm  
Grey, Stone



**CONCORDE**  
600 g/m<sup>2</sup>  
White, Stone, Taupe, Grey





**NID D'ABEILLE / WAFFLE**  
200 gsm  
Kimono collar



**RIAD**  
280 gsm  
Shawl collar & hood



**DIAMANT**  
270 gsm  
Kimono collar  
Finishing white piping





**LOUXOR**  
420 gsm  
Shawl collar, Velvet



**RANELAGH**  
400 gsm  
Shawl collar, Ribbed velvet



**SAPHIR**  
220 gsm  
Kimono collar, polycotton



**TERRY**  
380 gsm  
Shawl collar



**ROYALE**  
400 gsm  
Tailored collar, white microcotton



**FLUFFY**  
300 gsm  
Shawl collar, ext. micro fiber







**SIDNEY**  
750 gsm  
50x85 cm



**CONCORDE**  
900 gsm  
50x85 cm



**RANELAGH**  
800 gsm  
50x85 cm



**OXANNE**  
620 gsm  
50x85 cm



**IMPERIAL**  
1200 gsm  
55x80 cm



**QUADRA**  
580 gsm  
50x75 cm



**PAIMPOL**  
800 gsm Velvet  
50x85 cm



**BEDSIDE RUG**  
Memory foam- jersey case & polycotton cover  
50x70x3 cm









TABLE LINEN



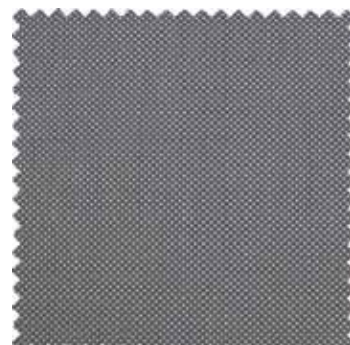
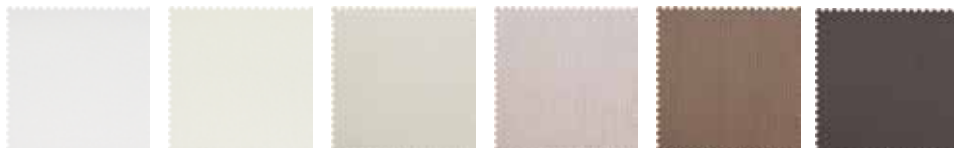
## NATTÉ

100% two-ply twisted mercerized cotton

205 gsm

Width 240 cm

White, Blanc douceur, Ivory Nacre, Café, Ardoise, Zinc



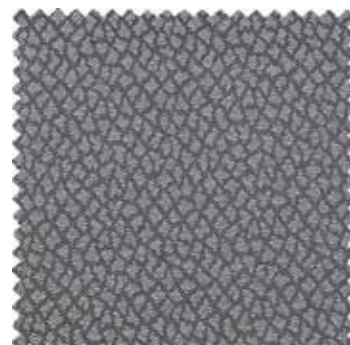
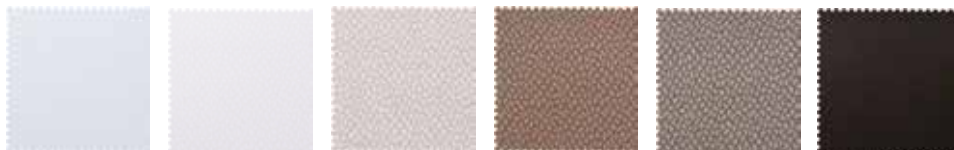
## CAILLOUTÉ

100% two-ply twisted mercerized cotton

205 gsm

Width 240 cm

White, Blanc douceur, Nacré, Café, Etain, Ardoise, Zinc



## CANNELÉ

100% two-ply twisted mercerized cotton

205 gsm

Width 240 cm

White, Blanc douceur, Cacao, Anthracite, Argent, Noir



## PYRAMIDE

100% two-ply twisted mercerized cotton

205 gsm

Width 240 cm

White, Blanc douceur, Ivory, Nacré, Gris brise 953, Gris brise 998, Moka





TREND 1

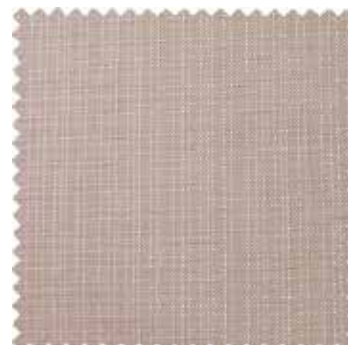
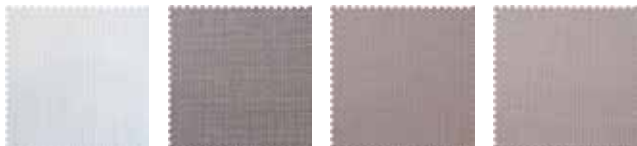
## RÉTRO

100% two-ply twisted mercerized cotton

190 gsm

Width 240 cm

White , Etain/Métal, Etain/Zinc, Etain/Bleuet, Etain/Perle



## MARINE

100% two-ply twisted mercerized cotton

240 gsm

Width 240 cm

Nacre/Blanc, Nacre/Acier, Nacre/Anthracite, Nacre/Perle



## MINÉRAL

100% two-ply twisted mercerized cotton

230 gsm

Width 240 cm

Blanc, Gris anthracite/Pin, Gris anthracite/Zinc, Gris anthracite/Taupe, Gris anthracite/Nacré, Gris anthracite/Acier



## SATIN UNI

100% two-ply twisted mercerized cotton

230 gsm

Width 240 cm

Blanc, Acier, Pin, Zinc, Taupe, Nacré, Perle, Nacre/ Gris anthracite, Available in several colors





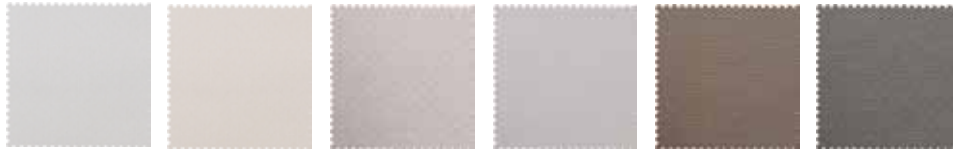
## ORSAY

100% two-ply twisted mercerized cotton

205 gsm

Width 240 cm

White, Ivory, Nacré, Gris brise, Café, Etain, Zinc



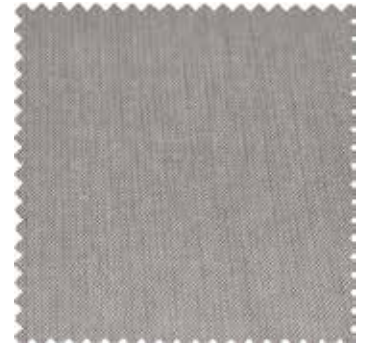
## MINI NATTÉ

100% two-ply twisted mercerized cotton

205 gsm

Width 240 cm

White, Blanc douceur, Nacré/Marron, Nacré/Zinc, Nacré, Noir, Pin



## MALAWI

100% two-ply twisted mercerized cotton

205 gsm

Width 240 cm

White Blanc douceur, Nacré/Café, Nacré/Zinc, Nacré, Noir, Pin



## PERLA

100% two-ply twisted mercerized cotton

205 gsm

Width 240 cm

White, Blanc douceur, Nacré/Marron, Nacré/Zinc, Nacré



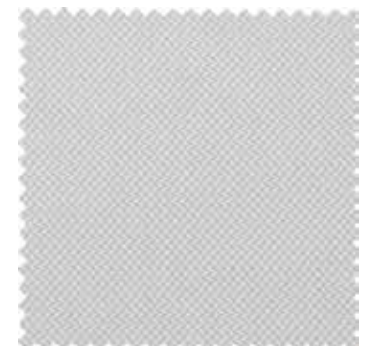
## LOUVRE

100% two-ply twisted mercerized cotton

205 gsm

Width 240 cm

White, Blanc douceur, Ivory, Nacré, Gris brise





TREND 3

## ASSOUAN

100% two-ply twisted mercerized cotton

216 gsm

Width 240 cm

White, Blanc douceur, Nacré, Chamois, Gris, Nacre/Bleuet, Café



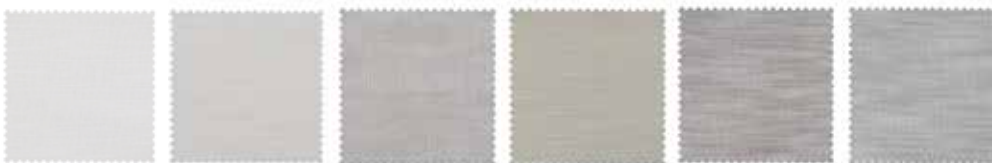
## YOLA

100% two-ply twisted mercerized cotton

218 gsm

Width 240 cm

White, Blanc douceur, Blanc/Nacré, Chamois, Pin, Zinc, Nacre/Zinc



## TEMARA

100% two-ply twisted mercerized cotton

216 gsm

Width 240 cm

White, Blanc douceur, Nacré, Pin, Café, Marron, Gris, Zinc, Chamois, Noir







TREND 4

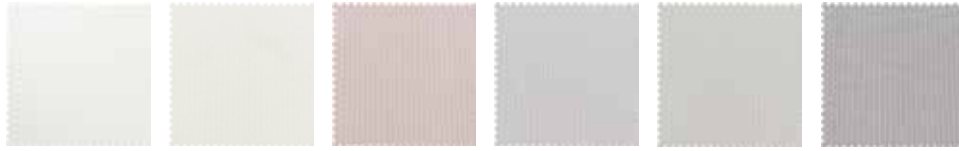
## FINE CÔTE

High Thread Count - Combed Cotton

225 gsm

Width 310 cm

White, Blanc douceur, Blanc/Nacré, Blanc/Alouette, Blanc/Brume, Blanc/Zinc, Blanc/Anthracite

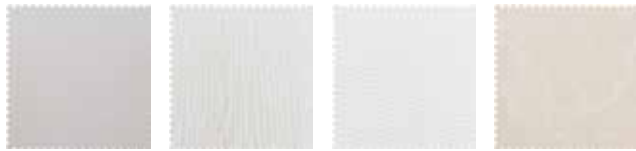


## CÔTE DE CHEVAL / MULTI-LIGNES / MULTI-VAGUES / WINDSOR

High Thread Count - Combed Cotton

Width 310 cm ( except Côte de cheval width 270 cm )

White



## PUR LIN / MÉTIS / MULTI-PLAIN / ALOYSSA / MULTI-PEARL

Coton peigné

Width 310 cm ( except Métis Royal width 270 / 300 cm )

White





MILLESIME

### PLAIN SATIN

100% two-ply twisted mercerized cotton - 205 gsm  
Width 240 cm

White, Beige 379, Beige 380, Ficelle, Kraft, Nacré, Etain, Champagne, Gris perle, Brise,  
Black, Grenade, Paille, Mousse, Abricot, Baltique, Bouton d'Or, Aubergine, Azalée, Fraise, Turquoise,  
Pêche, Plusieurs autres coloris disponibles, available in other colors



### DAKTARI

100% Polyester - 185 gsm  
Width 340 cm

White, Bianco Naturale, Seppia, Grit, Aprica, Louvre, Vidal, Malesia, Selleone, Zeppa, Collana,  
Capitol, Reggia, Curly, Mundial, Postumia, Zama, Lamiera, Crabe, Aires, Plaga





BASIC



Tennessee River

Scale 1 Inch = 1/2 Mile

RIVER

Vestal

Ridge

Man



Thank you to our customers for their participation in our catalog #bistonapkingt   

# BEDDING & DECORATION



## DUVETS

Natural duvets  
> bespoke

Filling siliconed hollow fibers  
> 350 g/m<sup>2</sup>  
> 400 g/m<sup>2</sup>

Comfort Plus Filling 100% microfibers  
> 400 g/m<sup>2</sup> cover 100% percale

Comfort Plus Summer Filling 100% microfibers  
> 150 g/m<sup>2</sup> cover 100% percale

Comfort Absolu Filling microfibers  
> 400 g/m<sup>2</sup> cover 100% percale



## PILLOWS

> News downy feathers

> 50% polyether and 50% polyester

> 100% Rhomboid bars of polyether

> Comfort 100% polyester

> Comfort Plus 100% polyester microfibers

> Comfort Absolu 100% polyester microfibers



## MATTRESS PROTECTOR

Fitted or 4 elastic bands

> 100% cotton 200 g/m<sup>2</sup>

> 100% cotton 400 g/m<sup>2</sup>

> Blend cotton 450 g/m<sup>2</sup>

> Cotton coated PVC 400g/m<sup>2</sup>

> Cotton with vinyl layer 280 g/m<sup>2</sup>

> Cotton with polyurethane 200 g/m<sup>2</sup>



## MATTRESS PAD

Serenity 500 g/m<sup>2</sup>

Filling microfibers

Elastic band at each corner

Open boxed stitching







## CURTAINS

Wide range of curtains  
Obscuring, opaque,  
bespoke



## BAD SKIRTS

2 finishing available  
Plate with poly cotton  
Available in several colors



## POLAR BLANKETS

100% polyester 350 g/m<sup>2</sup>  
Available in several colors



## PLAIDS

Sweet Love, 350 g/m<sup>2</sup>  
Available in several colors



Hotel THE PEARL - Marrakech

Présidence de la République - Paris  
 Le Royal Monceau - Paris  
 Paul Bocuse - Collonges  
 Georges Blanc - Vonnas  
 L'Apogée - Courchevel  
 Les Fermes de Marie - Megève  
 Normandy Barrière, Royal Barrière,

Fairmont Pacific Rim - Vancouver  
 Hershey's Resort - Hershey  
 Hyatt Regency - Clearwater Beach /  
 San Antonio Riverwalk / Curacao  
 Mandarin Oriental - Paris / Las Vegas  
 / Washington DC / Genève / Bangkok  
 Loews - Atlanta / New York

Golf Barrière - Deauville  
 Château Saint Martin - Vence  
 Cheval Blanc - Courchevel / Saint Bar-  
 thélémy / Randheli  
 La Mamounia - Marrakech  
 Beau Rivage Palace - Lausanne  
 La Réserve - Genève / Paris

Four Seasons - Beverly Hills /  
 Philadelphia / Punta Mita / Séoul /  
 Maldives / Mauritius / Seychelles  
 Ritz Carlton - New York / Tokyo /  
 Lang Kawi / Paris  
 Robuchon MGM - Las Vegas  
 The Jefferson Hotel - Washington DC

Le Lutetia - Paris  
 Le Meurice - Paris  
 Le Peninsula - Paris / HK / Shanghai / NY  
 / Chicago / Manilla / Pekin  
 Andaz Fifth Avenue - New York  
 Aria Resort & Casino - Las Vegas  
 Caesars Palace - Las Vegas

Viceroy - Snowmass Village  
 Hilton - São Paulo  
 Banyan Tree - Dubaï  
 Leela Venture - Mumbai  
 Marriott - Doha  
 Wynn Palace - Macau  
 Galaxy - Macau

Burj Al Arab Dubai  
 Crowne Plaza Jeddah  
 Four Seasons Dubai/Abu Dhabi/ Bahrain/Riyadh  
 Marriott Riyadh  
 Ritz Carlton Jeddah/Riyadh/Bahrain/Doha  
 Courtyard Olaya Riyadh  
 Marina Hotel Kuwait

The Fontenay - Hambourg  
 Hotel Sanders - Copenhagen  
 Raffles Europesjski - Warsaw  
 Crowne Plaza - Copenhagen Towers  
 Waldorf Astoria - Beverly Hills  
 Trump Hotel - Washington DC  
 Loews - Miami Beach





[www.garnier-thiebaut-hotels.fr](http://www.garnier-thiebaut-hotels.fr)  
Thanks to the hotel The Pearl in Marrakech  
Creation : Garnier-Thiebaut - Photos : Didier Delmas

